

## Over half of the applications for housing registered on Etxebide are submitted by young people

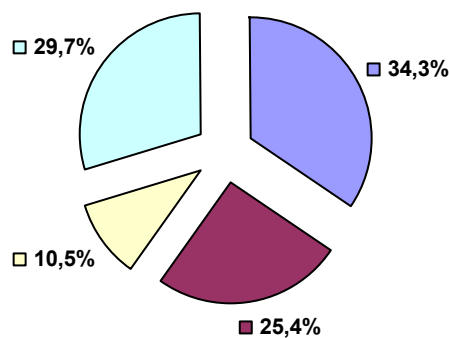
Applications from people under 35 years of age who request housing to live alone are on the increase



In 2005, 66.7% of all applications submitted to Etxebide were from people under the age of 35. Of these applications, 50.2% were from young people in the 25-29 age group; 36.9% from people in the 30-34 age group; 12.8% from people in the 20-24 age group and, finally, 0.2% from people under the age of 20.

If we study the figures by the sex of applicants, 34.3% of the applications were submitted by men and 25.4% by women.

People under the age of 35 registered in Etxebide based on sex. Percentages. 2005



■ Chicos ■ Chicas ■ Chicos/chicas ■ Sin dato

Source: Department of Housing and Social Issues & own data

If compared with data from 2001, there has been an increase in the number of applications submitted by people below the age of 35 who state they request housing to live alone: in 2001 they totalled 67.9% and in 2005, 82.5%.

**Under 35s registered in Etxebide based on size of household unit. Total numbers and percentages. 2001-2003-2005**

	2001		2003		2005	
<b>Total &lt;35 years old</b>	<b>52.827</b>	<b>100</b>	<b>66.296</b>	<b>100</b>	<b>56.187</b>	<b>100</b>
<b>One</b>	35.856	67,9	50.473	76,1	46.335	82,5
<b>Two</b>	14.761	27,9	13.596	20,5	7.975	14,2
<b>Three</b>	1.598	3,0	1.551	2,3	1.243	2,2
<b>Four or more</b>	612	1,2	676	1,0	634	1,1

Source: Department of Housing and Social Issues & own data

34% of the people registered in Etxebide younger than 35 have a weighted income (based on Official Protected Housing regulations) between 9,000 and 15,100 euros, and 27% between 15,100 and 21,100 euros.

**Under 35s registered in Etxebide based on average income level. Total figures and percentages. 2001-2003-2005**

	2001		2003		2005	
<b>Total &lt;35 years of age</b>	<b>52.827</b>	<b>100</b>	<b>66.296</b>	<b>100</b>	<b>56.187</b>	<b>100</b>
<b>&lt;3.000</b>	6.475	12,3	3.954	6,0	1.223	2,2
<b>≥3.000 y &lt;9.000</b>	10.782	20,4	10.221	15,4	7.147	12,7
<b>≥9.000 y ≤15.100</b>	14.636	27,7	18.511	27,9	19.246	34,3
<b>≥15.100 y ≤21.100</b>	7.077	13,4	10.854	16,4	15.658	27,9
<b>&gt;21.100 y &lt;27.100</b>	3.148	6,0	5.470	8,3	8.156	14,5
<b>≤27.100 y ≤33.100</b>	834	1,6	1.740	2,6	3.291	5,9
<b>No income registered</b>	9.875	18,7	15.546	23,4	1.466	2,6

Source: Department of Housing and Social Issues & own data

Average income based on official Protected Housing regulations